

SA or TB
piano
duration: 2:15



Cantate Domino

*by
Nancy Hill Cobb*



SANTA BARBARA MUSIC PUBLISHING, INC.
Post Office Box 41003, Santa Barbara, CA 93140
WEBSITE: www.sbmp.com

Cantate Domino

S.A. or T.B.

Liturgical source: Psalm 95

Nancy Hill Cobb

Part 1, 2 unison

Liltingly ♩=72

4 *f*

Can - ta - te Dom - i - no
kahn-TAH - teh DAW - mee-naw

Piano

f *mf*

ped. *

can - ti - cum nov - um, can - ta - te Dom - i - no om - nis ter - ra.
KAHN - tee-koom NAW - voom, kahn - TAH - teh DAW - mee-naw AWM - nees TEHR - rah

ped. * *sim.*

8

Can - ta - te Dom - i - no, can - ta - te Dom - i - no, al - le - lu, al - le - lu,
kahn-TAH - teh DAW - mee-naw, kahn - TAH - teh DAW - mee-naw, AHL - leh-loo, AHL - leh-loo,

ped. * *ped.* * *sim.*

It is illegal to duplicate this piece by photocopying or any other means.
Those violating the copyright will be punished to the full extent of the law.
© Copyright 1999 for ALL COUNTRIES by Santa Barbara Music Publishing

14

Part one
 al - le - lu - ia. Can - ta - te
 ahl - leh - LOO - eeah.

Part two
 Can-ta - te Dom - i - no

*And. * And. * And. * And. **

18

Do - mi - no, can - ta - te Do - mi no. Can - ta - te Dom - i - no,
 can - ti - cum nov - um, can - ta - te Dom - i - no om - nis ter - ra. Can - ta - te Dom - i - no,

*And. * sim. And. * sim.*

can - ta - te Dom - i - no, al - le - lu, al - le - lu, al - le - lu Ia.
 can - ta - te Dom - i - no, al - le - lu, al - le - lu, al - le - lu ia.

*And. * And. * And. * And. **

Part 1 and 2

p

Can - ta - te
kahn - TAH-teh

sim. *Ped.* * *Ped.* * *Ped.* * *Ped.* * *Ped.* * *sim.*

pp

Do - mi - no ben - e - di - ci - te nom - i - ne e - jus. An -
DAW - mee - naw beh - neh - DEE - chee - teh NAW - mee - neh EH - ius ahn -

Ped. * *Ped.* * *sim.*

nun - ti - a - te in - ter gen - tes glo - ri - am tu - am.
noon - tsee - AH - teh EEN - tehr GEHN - tehs GLAW - ree - ahm TOO - ahm.

mp

Ped. * *Ped.* * *Ped.* * *Ped.* * *Ped.* * *

36

mf Quo - ni-am mag - nus Do - mi - num, quo - ni-am mag - nus Do - minum, *p*
 KWOH-nee-ahm MAHN - eeoos DAW - mee - noom, et eht

mf Quo - ni-am mag - nus Do - mi - num, quo - ni-am mag - nus Do - minum,
 KWOH-nee-ahm MAHN - eeoos DAW - mee - noom,

sim.

43

mp laud - a - bil - is nim - is, et laud - a - bil - is nim - is,
 lahoo-DAH-bee-tees NEEM - ees,

p Et laud - a - bil - is nim - is, *mp* et laud - a - bil - is

8va

Red. * *Red.*

46

et laud - a - bi - lis nim - is, nim - - - is. *f*

nim - is, et laud - a - bi - lis nim - is, nim - - - is. *f*

* *Red.* * *Red.* *

53

f
Can - ta - te

f
Can - ta - te Dom - i - no

Ped. * *Ped.* * *Ped.* * * *Ped.* * *Ped.* * *Ped.* *

Do - mi - no, can - ta - te Do - mi no.

can - ti - cum nov - um, can - ta - te Dom - i - no om - nis ter - ra

sim.

57

Can - ta - te Dom - i - no, can - ta - te Dom - i - no, al - le - lu, a - le - lu,

Can - ta - te Dom - i - no, can - ta - te Dom - i - no, al - le - lu, a - le - lu,

Ped. * *Ped.* * * *sim.*

61

Al - le-lu, al - le-lu,

Al - le-lu, al - le-lu,

sans ped.

*Ped. * Ped. **

63

Al - le-lu, al - le-lu - ia. Al - le -

Al - le-lu, al - le-lu - ia. Al - le -

*Ped. * Ped. **

*Ped. * Ped. **

66

lu - ia.

lu - ia.

*Ped. * Ped. * sim.*

About the composer:

Nancy Hill Cobb (b. 1951) is Chair of the Music Department at Indiana State University in Terre Haute, Indiana. She holds the Bachelor of Music in composition from Oklahoma Baptist University, the Master of Music in composition from Michigan State University, and the Doctor of Musical Arts in composition from the University of Oklahoma. She has been a recipient of the ASCAP standard award yearly since 1995. Visit www.sbmp.com to see additional pieces by Nancy Hill Cobb.

The text from Psalm 95

Cantate Domino canticum novum,
cantate Domino omnis terra.

Cantate Domino,
benedicite nomini ejus.

Anuntiate inter gentes gloriam tuam,
in omnibus populis mirabilia ejus.

Quoniam magnus dominum
et laudabilis nimis.

Sing to the Lord a new song,
sing to the Lord all the earth.

Sing to the Lord,
bless his name.

Declare his glory among the nations
his wonders among all people.

For the Lord is great
and greatly to be praised.

Performance notes:

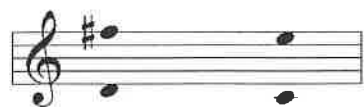
This piece can be performed by any choir capable of singing two-part music, be they treble or men. Robert Ward has written the following especially for conductors of children's choirs.

Teachers of children appreciate when a composer writes a quality piece in a logical way. Nancy Cobb has accomplished this in *Cantate Domino*. The ABA-Coda structure will make teaching and memorization easy.

Initially, I suggest clapping and counting eighth notes, moving the accent periodically to create 6/8 and 3/4 meter. It is important to have the singers experience the rhythm before beginning the melody.

As regards the melody, solfege is your best bet in teaching the music. The largest interval throughout is a perfect fifth—great for teaching sight reading. In the first “A” section (measures 1-22), there is only one accidental, the lowered seventh degree (C-natural). In the “B” section (measures 27-49), the only accidental is the C# (measure 40) that moves the music back to D major. If a choir is without the resources to divide into three parts at measures 48 and 49, leave out the E-natural in order to preserve the harmonic effect of the 4-3 suspension. When the “A” section returns at measure 53, it is a literal return with the exception of beat two in measure 59. The Coda will learn quickly because the harmonic structure is reminiscent of what the singers have heard before. If three parts are impractical for the choir at measure 64, leave out the D-natural—there is plenty of third in the piano part.

Range:



I

II

Recording available

Performed by the Tacoma Youth Choir. Judy Herrington, conductor
Available from the publisher - SBMP CD 4 - \$5
Order at: www.sbmp.com or call 805.962.5800

Visit SBMP.com

to hear complete recordings *and*
to see complete scores of the entire SBMP catalog

